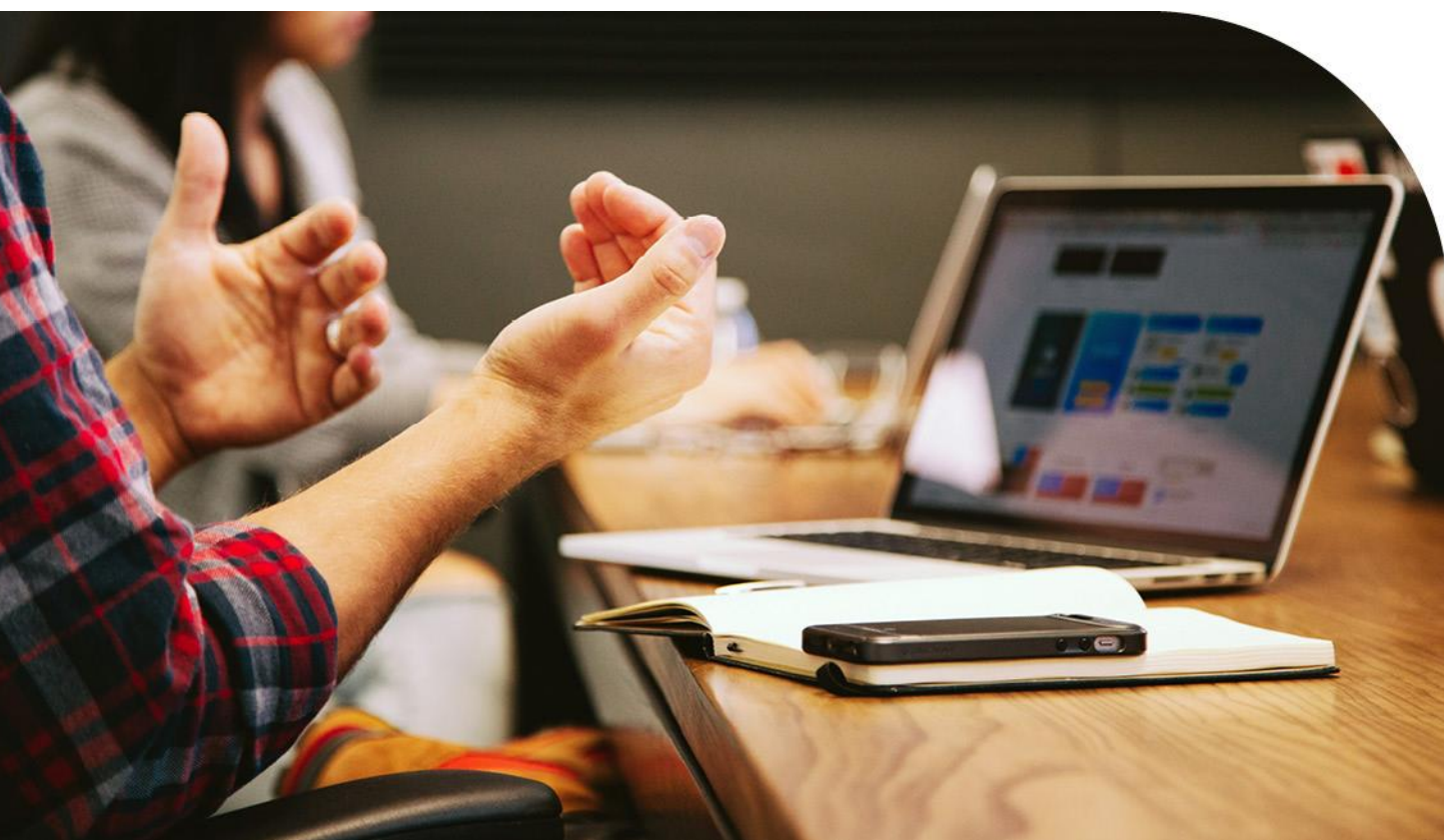




CDRmare Internal Communication Plan



July 2022

CDRmare Internal Communication Plan

CONTENT

A. OBJECTIVES AND RATIONALE	2
B. CDRmare GOVERNANCE	2
OVERVIEW	2
1) CO-CHAIRS	3
2) EXECUTIVE BOARD (EB).....	3
3) CDRmare MEMBER.....	4
4) MEMBERS GENERAL ASSEMBLY (MGA).....	4
5) THEMATIC WORKING GROUPS.....	4
6) SCIENTIFIC ADVISORY BOARD (SAB)	5
7) CDRmare NATIONAL EXPERT FORUM ON MARINE CO ₂ REMOVAL.....	5
C. MANAGEMENT & TRANSFER STRUCTURES.....	6
Overview of the different positions and responsibilities within the CDRmare Operative Management Team:	6
CDRmare-Manager (structurally affiliated to RETAKE).....	6
CDRmare Transfer & Outreach Manager (structurally affiliated to ASMASYS).....	6
CDRmare Public Relation Manager (structurally affiliated to RETAKE)	6
CDRmare Data Manager (structurally affiliated to RETAKE)	7
CDRmare Graphics Designer (structurally affiliated to ASMASYS).....	7
Consortia Managers (structurally affiliated to individual consortia)	7
D. COMMUNICATION CONCEPT, FLOW & MEASURES.....	7
Objective	7
Communication Tools	7
E. COLLABORATION GUIDELINES FOR CDRmare COMMUNITY.....	9
Code of Conduct.....	9
CDRmare Counsellor.....	9
F. EXTERNAL COMMUNICATION – TRANSFER AND PUBLIC RELATION.....	10
Transfer	10
Public Relation.....	10
Boilerplate	11
G. PUBLICATIONS.....	12
Scientific Publications	12
H. CDRmare Corporate Identity	12
Corporate Design	12

A. OBJECTIVES AND RATIONALE

The research mission »Marine carbon sinks in decarbonisation pathways (CDRmare)« of the German Marine Research Alliance (DAM) is composed of six consortia investigating different methods of marine CO₂ removal and storage (alkalinisation, blue carbon, artificial upwelling, CCS) in terms of their potential, risks and trade-offs and bringing them together in a transdisciplinary assessment framework.

The research mission is coordinated by two Co-chairs who are responsible for strengthening the linkages and cooperation between the different consortia through scientific exchange and internal information flow. Within each consortium the relationships between the various partners and their obligations and rights with respect to each other and within the consortium are regulated in the individual Consortium Agreements. Each partner is responsible for delivering the contracted deliverables and achieving the milestones promised for the project as outlined in the lead proposals (*Leitanträge*).

The structure and coordination of CDRmare, as well as the collaboration and information flow across consortia, are defined and agreed upon in the “[Umbrella Paper](#)” (*Dachpapier*). The CDRmare management structure allows all partners to fulfil their objectives and feed information into the decision-making process. As outlined in the “Umbrella Paper”, CDRmare has a central decision-making body through the CDRmare Executive Board (EB) and a decentralised execution of activities through the consortium coordinators. The EB in turn is advised, legitimised and supported in executing and representing CDRmare on all important affairs by the CDRmare Members General Assembly. This model ensures timely consideration and resolution of strategic and executive issues while being open to input from all partners and members.

The internal communication concept aims at

- supporting the information flow within CDRmare,
- strengthening the alignment of members with the research mission and thus increasing the brand image,
- increasing the engagement of members in CDRmare,
- building trust,
- improving the performance of CDRmare members,
- having an effective crisis management and decrease (unforeseen) risks, and
- increasing feedback loops throughout the whole CDRmare structure.

This is a living document, since communication channels and tools might change or will be added during the research mission’s lifetime.

B. CDRmare GOVERNANCE

OVERVIEW

CDRmare is a highly complex interaction of 22 partner organisations, several collaborating projects and various stakeholders of different levels. In addition, each of the six consortia comprises of a medium to large network of research institutions cooperating with different partners from various sectors of the industry, federal institutes, NGOs and/or individual stakeholders. Therefore, a clear and transparent governance structure is essential for the successful coordination of CDRmare. Seven different governance bodies will ensure transparent decision-making and controlling processes (Fig. 1).

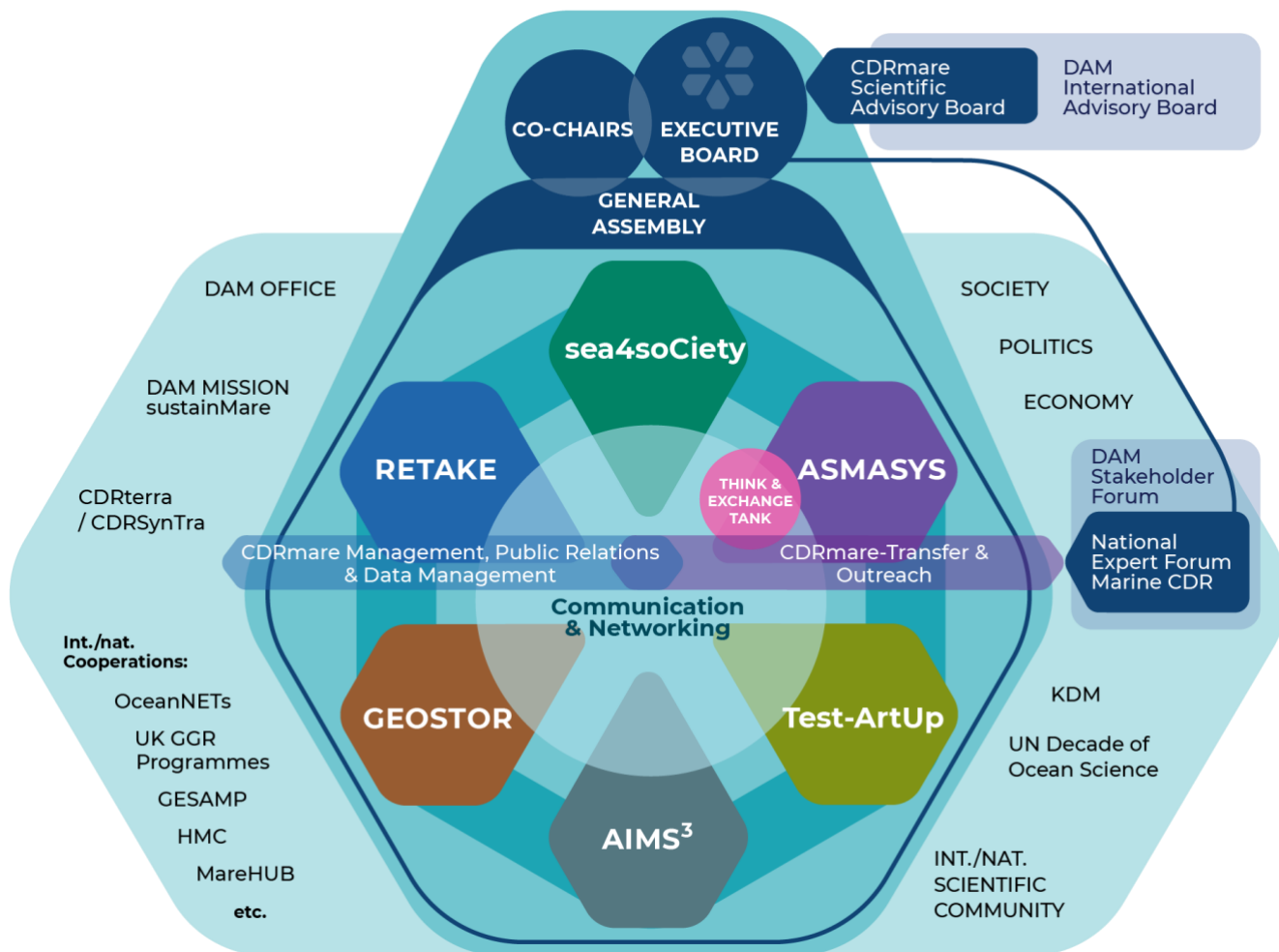


Fig: 1 – CDRmare structure

1) CO-CHAIRS

The research mission is coordinated by two Co-Chairs whose responsibilities are to ensure the scientific coherence between the consortia, the synthesis of the scientific outputs and the omission of competition between the consortia. Furthermore, they lead the overarching operative management and transfer activities of CDRmare, act as focal points of contact for all inquiries concerning the whole research mission and represent CDRmare externally.

2) EXECUTIVE BOARD (EB)

The CDRmare EB is chaired by the CDRmare Co-Chairs and comprises all Consortia Coordinators. The EB passes its resolutions by a simple majority of the votes of the members present. It shall exhaust all possibilities to reach decisions by consensus. In the event of a tie, the votes of the Co-Chairs shall be decisive.

Consortium	Coordinator	Institute
ASMASYS	Prof. Gregor Rehder (Co-Chair)	IOW
RETAKE	Prof. Andreas Oeschies (Co-Chair)	GEOMAR
sea4soCiety	Prof. Martin Zimmer	ZMT Bremen
GEOSTOR	Prof. Klaus Wallmann	GEOMAR
Test-ArtUp	Prof. Ulf Riebesell	GEOMAR
AIMS^3	Prof. Achim Kopf	MARUM / University Bremen

The EB’s responsibilities include:

- i) overseeing the political direction of CDRmare,
- ii) coordinating and monitoring the overarching scientific work of CDRmare,

- iii) providing options for actions and actively participating in policy advice,
- iv) performing quality control,
- v) identifying any problems and risks within the consortia at an early stage and taking measures to counteract them,
- vi) closely linking with CDRterra and other thematically similar projects,
- vii) ensuring integration of relevant stakeholders.

The Consortia Coordinators are responsible for channelling relevant information to the CDRmare members within their consortia and for the fulfilment of the consortia's planned project outputs.

3) CDRmare MEMBER

A full member of CDRmare is everyone who is named in the Leitanträge (e.g. Principal Investigators of Work Packages) and/or in the partners' Vorhabenbeschreibungen (listed within the application document Beigestellte Aktivitäten) and/or those whose position is financed by one of the consortia. In summary, a member is everyone working actively in one of the consortia's Work Packages towards reaching the set milestones.

A consortium can affiliate Associate Members. An Associate Member will be treated like a full member except that they do not have a vote at the Members General Assembly (see below). After the cordial agreement of the consortium members or respective executive body of the consortium, the Consortium Coordinator needs to apply for admission of the Associate Member by the CDRmare EB. Only in exceptional cases (e.g. conflict of interest) can the EB reject the affiliation of the Associated Member to the CDRmare community – they might then still be an Associated Member of the consortium. For the application of an Associate Member, the CDRmare Memorandum of Understanding needs to be signed by 1) the applicant, 2) the Consortium Coordinator, 3) one of the Co-Chairs in agreement with the CDRmare board. (see ANNEX I – MoU template)

A member can be declared a Defaulting Party by a consortium after breach of the Consortium Agreement. The Consortium Coordinator will have to inform the EB and the defaulting person has to leave the CDRmare community immediately.

A CDRmare member can also be expelled from the CDRmare community, if they violate the CDRmare Code of Conduct. The exclusion is decided by consensus of the CDRmare EB members.

4) MEMBERS GENERAL ASSEMBLY (MGA)

The MGA consists of all CDRmare members belonging to one (or more) of the six consortia and takes place annually. The MGA is chaired by the CDRmare Co-Chairs who will inform on the most recent research mission developments. In turn, the MGA provides feedback on the scientific performance within the Work Packages of the consortia, including the progress towards the fulfilment of the scientific objectives, stakeholder engagement and knowledge transfer. The MGA acts on the initiative of the EB and gives recommendations to the EB on any scientific and/or stakeholder aspects.

The principal decision-making mechanism of the MGA is consensual decision-making (this applies to in-presence, hybrid and virtual meetings). In case a consensus cannot be reached, a vote with simple majority shall lead to a decision. Each MGA member shall have one vote. In case of a tie, the CDRmare Consortia Coordinators will have the decisive vote. A member that has been declared to be a *Defaulting Party* may not vote.

5) THEMATIC WORKING GROUPS

Thematic cross-consortia working groups can be formed as needed. This can be the case when CDRmare has to position itself, a concept for an event participation or thematic focal points are to be worked out, or requests have to be evaluated and classified. Thematic Working Groups can be formed during the annual MGAs, but also at any other point in the funding phase of the research mission, if required.

6) SCIENTIFIC ADVISORY BOARD (SAB)

The CDRmare SAB consists of three DAM International Advisory Board (IAB) members who co-chair the CDRmare SAB and ten external national and international experts who are appointed by the EB and agreed upon by the DAM SAB. The SAB advises the CDRmare Co-Chairs, EB and MGA in all relevant aspects concerning scientific progress, management, knowledge transfer and international integration of the research mission. The SAB is informed about all project activities on a regular basis and attends the annual meetings of the project. Further meetings will be convened if needed. Further details on the election process and the role and responsibilities of the SAB members can be found in the CDRmare SAB Terms of Reference (see ANNEX II - CDRmare SAB ToR).

Table 1.: CDRmare Scientific Advisory Board Co-Chairs and members.

CDRmare SAB Co-Chairs	Affiliation	Expertise
Dr. Paul Connolly (DAM IAB)	Marine Institute, Ireland	marine resources
Prof. Martin Quaas (DAM IAB)	University Leipzig, Germany	economy
Prof. Katherine Richardson (DAM IAB)	University of Copenhagen, Denmark	biol. oceanography
CDRmare SAB Members		
Prof. Anna Armitage	Texas A&M University, USA	blue carbon, biology
Dr. Holly Jean Buck	University of Buffalo, USA	clim. change politics
Dr. Stefan Bünz	University of Tromsø - The Arctic University of Norway, Norway	CCS
Prof. Doug Connelly	National Oceanography Centre, UK	CCS, monitoring
Prof. Jean-Pierre Gattuso	CNRS-Sorbonne University, France	blue carbon
Clare Heyward	University of Tromsø - The Arctic University of Norway, Norway	clim. change ethics
Prof. Rachael James	University of Southampton, UK	CCS, alk., blue carbon
Dr. Carolin Löscher	University of Southern Denmark, Denmark	biogeochemistry
Dr. Phil Renforth	Heriot-Watt University, UK	alkalinisation
Dr. Korey Silverman-Roati	Columbia University, USA	clim. change law

7) CDRmare NATIONAL EXPERT FORUM ON MARINE CO₂ REMOVAL

The National Expert Forum on Marine CO₂ Removal consists of members from the political-social space (e.g. federal agencies and ministries) as well as NGOs, business associations, and mediating institutes and organisations. The forum seeks to provide a bridge between stakeholders and expertise within CDRmare to allow for the exchange on scientific findings and political developments, for deliberating further research questions and for supporting the development of decision pathways on marine CDR.

The official start of the Forum is foreseen for the first half of 2022. After the First Annual Meeting (March 2022) all potential members will be invited and asked to confirm their membership in the National Expert Forum on Marine CO₂ Removal. The Forum will take place two times a year (one meeting in link to the annual meeting).

C. MANAGEMENT & TRANSFER STRUCTURES

The CDRmare networking and transfer activities are coordinated by the CDRmare Co-Chairs with support of the Core Team covering CDRmare management, public relation, data management, transfer & outreach measures. The Core Team stays in continuous contact with the management of CDRterra, particularly with the consortium CDRSynTra, and the DAM to recognise synergies and combine efforts in the scope of networking and transfer activities.

The Core (Management) Team together with the Consortia Managers forms the CDRmare Operative Management. During regular weekly meetings, the Consortia Managers update the Core Team about coordination tasks, transfer activities, scientific developments and activities within their consortia. At the same time the Core Team informs the Managers on mission-level issues and ensures that networking and transfer activities will be aligned whenever possible.

Table 2.: Regular meeting schedules of the different groups for information flow and communication:

Who	Content	Frequency	How	Responsible
Co-Chairs & Support-Team	Status	weekly	ViCo	CDRmare Manager
Core (Management) Team	Status	on demand / weekly	ViCo	CDRmare Manager
Operative Management	Status	weekly	ViCo	CDRmare Manager
Executive Board (EB)	Scientific progress	monthly	ViCo or in presence	Co-Chairs / CDRmare Manager
Scientific Advisory Board (SAB)	Scientific progress	annually or on demand	ViCo or in presence during annual assembly	Speakers / CDRmare Manager
CDRmare National Expert Forum on Marine CO ₂ Removal	Scientific progress	bi-annually	ViCo or in presence during annual assembly	Speakers / CDRmare Transfer Manager

Overview of the different positions and responsibilities within the CDRmare Operative Management Team:

CDRmare-Manager (structurally affiliated to RETAKE)

i) focal point of contact for CDRmare; ii) responsible for establishing and maintaining a system of communication for the entire research mission; iii) networking and coordination guaranteeing the alignment of activities and internal information flow among the consortia; iv) supervision of the governance bodies and the international CDRmare Scientific Advisory Board; v) exchange with DAM office, the DAM research mission *sustainMare* and other relevant cooperation partners and projects; vi) ensuring common public image and a transparent communication strategy to society

CDRmare Transfer & Outreach Manager (structurally affiliated to ASMASYS)

i) focal point of contact for stakeholders and the National Expert Forum and regarding overarching transfer activities; ii) synchronises stakeholder needs and project deliveries; iii) aligns transfer activities with other national and international projects (especially CDRterra/CDRSynTra and OceanNETs) and networks; iv) develops targeted dissemination and outreach materials and formats

CDRmare Public Relation Manager (structurally affiliated to RETAKE)

i) coordinates timely and professional information flow to the public by using various social media channels; ii) maintains website of the research mission (<https://cdrmare.de/>) and a carbon dioxide-removal news stream

(<https://carbondioxide-removal.eu/projekte/carbondioxide-removal-news/>); iii) prepares cross-consortia press releases; iv) establishes an early-reaction-system; v) supports internal communication by producing regular CDRmare newsletter and maintaining the newportal on the CDRmare website; v) archiving of CDRmare media response

CDRmare Data Manager (structurally affiliated to RETAKE)

i) coordinates, supports and combines the different data management activities in the consortia and partner institutions; ii) harmonises cross-consortia data handling supporting the scientists to publish quality-controlled data in certified data centres according to FAIR principles; iii) develops and implements a binding data policy, supported by appointed data managers of the individual consortia

CDRmare Graphics Designer (structurally affiliated to ASMASYS)

provides i) layouts; ii) illustrations and infographics supporting all information; iii) transfer and outreach products

Consortia Managers (structurally affiliated to individual consortia)

i) ensure smooth implementation of administrative, operational and scientific requirements and obligations of the six consortia in close consultation with Consortia Coordinators; ii) organise joint activities and promotion of within- and across-consortia networking; iii) organisation and execution of consortia meetings; iv) direct link to CDRmare management and Core Team; v) coordination of outreach activities within the consortium, vi) responsible for internal communication platform as well as individual consortium websites, vii) provide logistical project support

D. COMMUNICATION CONCEPT, FLOW & MEASURES

Objective

A smooth and constructive communication among all CDRmare members, consortia, partners, stakeholders and the public is essential for the success of the project. Therefore, short communication lines, allowing a straightforward decision-making process, are desired. This aims at ensuring that all members of the consortia are kept informed about plans, progress and existing or potential future problems. Various formats are used for sharing project information and updates, including document sharing software, websites, collaborative authoring, mailing lists, and reports. These communication tools are described below before these tools will be linked to the internal communication goal which had been identified in part A ‘Objectives and Rationale’. Please note that some of these tools can be used for external communication too.

Communication Tools

CDRmare uses a variety of tools to facilitate a precise and successful mission-wide communication.

Internal communication platform: the software Confluence, hosted by the AWI, serves as the main internal communication and exchange platform for CDRmare (<https://spaces.awi.de/display/CDRmare/CDRmare>). Access is restricted to CDRmare members only. They are able to edit most of the CDRmare areas (it is possible to restrict areas for certain users only) and therefore can actively engage in sharing knowledge and information. Confluence also serves as a documentation tool for all project-relevant information and material such as graphics, logos and templates. In addition to Confluence, there will be a separate database for media files, hosted by GEOMAR.

Email: email communication will be used to distribute important information such as meeting dates, agendas, deadlines, reports etc. To avoid unnecessary emails and to ensure targeting information only to the right group of people different emails lists are set up for CDRmare and the individual research consortia, e.g. for the different Boards or the Early Career Scientists. (see ANNEX III for CDRmare email-lists)

Video Conferences (ViCo): the different Management & Transfer groups meet virtually on a regular monthly or weekly basis (see overview above), thereby continuously discussing scientific and organisational progress. In this way, upcoming questions or obstacles can be addressed quickly before developing into bigger problems.

CDRmare internal Newsletter: an internal newsletter will be published periodically 3-4 times per year. It will inform all members on recent scientific progress and ongoing activities within the individual consortia. It will compile the latest CDRmare publications, media coverage and events of interest to the community. The newsletter will also be distributed to SAB members and collaboration partners.

Meetings: Work Package meetings are scheduled upon demand throughout the project duration. Further, yearly meetings are planned within the individual consortia as well as for the whole research mission. Those meetings serve to strengthen collaboration and networking and to discuss the scientific progress between all work packages.

Workshops: Meetings among consortia members (and external experts) are planned to discuss and/or perform practical work for a specific subject or research area (e.g. workshop on legal frameworks). These workshops serve to strengthen collaboration and networking and to discuss specific topics in more detail by involving e.g. external experts too.

Fact Sheets: These documents are summarising the current and research-based state of knowledge on marine CDR measures. For internal communication, the Fact Sheets align main messages which can be used by the whole consortium. In particular, the Fact Sheets are a good basis for expert and stakeholder dialogue and serve as a source of information for interested citizens.

CDRmare Seminar Series: The internal seminar series allows each consortium to present their goals, methods, research results as well as scientific risks. In addition, at a later stage of the research mission, members can exchange their ideas on how to best collaborate, align interest, and/or benefit from each other. Special seminars are planned for inviting guest speakers or other relevant CDR projects for a scientific talk and discussion.

Website: the CDRmare website (<https://cdrmare.de/>) provides information to stakeholders and the general public. It covers the research mission in general as well as the six consortia. There is detailed information on the different research foci, the scientists involved and planned activities. Furthermore, the website provides a regularly updated news section, and all CDRmare produced outreach materials will be made available through the website (e.g. fact sheets, handouts, flyers). In addition, the website links directly to the CDRmare and CDRterra jointly maintained news stream <https://carbondioxide-removal.eu/news/>.

Table 3.: Internal Communication goals, measures and implementation tools.

Goal	Measure	Implementation tools
Support the information flow within CDRmare.	<ul style="list-style-type: none"> Internal Communication Infrastructures in place 	<ul style="list-style-type: none"> E-Mail Confluence Website
Strengthen the alignment of members with the research mission and thus increasing the network, common identity and sense of unity.	<ul style="list-style-type: none"> Seminar Series Workshops Meetings (General Assemblies, Work Packages) 	<ul style="list-style-type: none"> Video Conference Meetings
Increase the engagement of members in CDRmare.	<ul style="list-style-type: none"> Seminar Series CDRmare internal Newsletter Contribution to FactSheets 	<ul style="list-style-type: none"> Confluence Email Meeting / ViCo

Build trust.	<ul style="list-style-type: none"> • Seminar Series • Regular Meetings (General Assembly, Work Packages) 	<ul style="list-style-type: none"> • Confluence • Meeting / ViCo
Improve the performance of CDRmare members.	<ul style="list-style-type: none"> • Contribution to FactSheets • Contribution to CDRmare internal Newsletter • Contribution to CDRmare Seminar Series • Special Workshops / Meetings 	<ul style="list-style-type: none"> • Email • Meeting / ViCo •
Have a better crisis management and decrease (unforeseen) risks.	<ul style="list-style-type: none"> • Share and present Internal Communication Plan and Structure • Regular Meetings (General Assembly, Work Packages) 	<ul style="list-style-type: none"> • E-Mail • Meeting / ViCo
Increase feedback loops throughout the whole CDRmare structure.	<ul style="list-style-type: none"> • Regular Meetings (General Assembly, Work Packages) 	<ul style="list-style-type: none"> • E-Mail • Meeting / ViCo

E. COLLABORATION GUIDELINES FOR CDRmare COMMUNITY

Code of Conduct

The Code of Conduct describes the most important principles and rules of conduct within the CDRmare community. These guidelines aim at identifying the core ethical values for conducting research for CDRmare members, establishing an example and developing this further within the wider marine science community and partner institutions. It covers the following areas:

- promotion of a good work-life-balance
- scientific responsibility and ethics (see also [CDRmare Data Management Policy](#) and CDRmare Innovative and Responsible Research Guidelines, *in progress*)
- value of diversity and individualism
- zero tolerance for unjust treatment and harassment
- promotion of career development
- environmental responsibility.

All CDRmare members are required to implement and transmit the values of the Code of Conduct within and outside the CDRmare environment such as their working groups, research departments and institutes.

The Code of Conduct can be downloaded here: https://cdrmare.de/en/guiding_documents/

CDRmare Counsellor

In case of conflicts between CDRmare members, the institutional support should be the first instance for solving the issue. If conflicts arise between members of different partner institutions, the counsellor as well as the CDRmare governance bodies closely work together with the CDRmare partner institutions to solve issues of all kinds to support all members of the research mission.

- advise in case of conflicts & problems
- fully anonymous
- can be contacted twice if necessary
- thereafter support in finding a solution offered by the CDRmare Executive Board

F. EXTERNAL COMMUNICATION – TRANSFER AND PUBLIC RELATION

Transfer

The goal of the overarching transfer of the research mission is to increase the societal impact of CDRmare research. Early interaction with stakeholders will increase the relevance and acceptance of the research and support the implementation of policies for the sustainable use of marine CDR methods and carbon storage in dealing with climate change. In addition to the establishment of the National Expert Forum, various interaction opportunities between scientists and stakeholders will be created and different targeted information products developed.

The CDRmare Transfer Coordinator reconciles the overarching transfer activities together with the Co-Chairs and the Executive Board. In order to coordinate and strengthen transfer activities across consortia, a flow of communication between the consortia and the CDRmare Transfer Coordinator must be ensured. One important measure for the exchange of information on transfer and communication activities is the CDRmare Transfer Network consisting of the transfer responsible person of each consortium and the overarching CDRmare Transfer & Outreach team. Monthly Transfer Network meetings take place to inform on consortia-specific stakeholder exchange and activities.

Public Relation

As the topic of the CDRmare research mission is being critically discussed in public, there is a high demand for a timely and professionally coordinated flow of information to the public. A close cooperation between the PR-manager and the CDRmare scientists and/or specific consortium is essential to distribute sound information. Coordination with CDRmare Management and Transfer & Outreach Manager must be ensured in order to align external communication. Communication platforms must be easily accessible and information need to be passed on regularly and transparently. To ensure this, effectively coordinated and comprehensive responses to media enquiries must be ensured.

Social media are an important tool for the dissemination of news and information of the research mission and for making it more visible to the public. They are also interactive and used for networking, although dissemination cannot be controlled as commenting is public and needs fast responses. In order to use social media responsibly, a [CDRmare Social Media Concept](#) has been developed. The aim of this concept is to structure the communication on the different social media platforms and to ensure that the activities of the research mission are successfully embedded into the structures of the overall external communication of CDRmare. The CDRmare PR-Manager is informed on ongoing PR-activities of individual consortia.

Alignment of external communication within the Operative Management team is ensured by the CDRmare Manager and Transfer & Outreach Manager, to be involved before information is released publicly. At the same time fast and clear coordination processes are warranted. Therefore, the CDRmare PR-work is closely interlinked with the CDRmare Management and Transfer & Outreach. Details on PR-tasks and creation, implementation and release processes are listed in the table below:

Table 4.: Description of CDRmare PR-tasks, processes and responsibilities.

PR-tasks	Process
Regular communication with the consortia of the research mission	Jour fix: Operative Management (Coordination Jf: CDRmare Manager)
Establishment and maintenance of a network of media representatives interested in the topic	CDRmare PR-Manager (supported by IOW)
Regular maintenance of a relevant news portal (https://carbondioxide-removal.eu/news/)	Joint activity: PR-Manager/ Transfer & Outreach Manager and in cooperation with CDRterra
Creation and implementation of a social media concept and postings on the CDRmare social media accounts	Creation / implementation: PR-Manager (supported by IOW) Postings: CDRmare PR-Manager (supported by IOW) in close collaboration with CDRmare Management and

	Transfer & Outreach and involved consortium / scientist(s)
Preparation and coordination of central press releases	Preparation: PR-Manager (supported by IOW) Content coordination: CDRmare Management and Transfer & Outreach Approval: CDRmare Co-Chairs
Preparation of a CDRmare internal digital newsletter (published 3-4 times per year)	Joint activity: PR-Manager/ CDRmare Manager Approval: CDRmare Co-Chairs
Maintenance of research mission's website	PR-Manager (supported by CDRmare Management and Transfer & Outreach)

For press inquiries and e.g. sovereignty of press releases, the general guidelines for communication with the media “Communication Rules in the Research Mission CDRmare – Here: Dealing with Press and Media” were discussed and agreed upon with the respective PR departments of the 22 CDRmare partner institutes. For less experienced scientists, a handout for dealing with the press were developed: “Recommendations for dealing with the media - A short introduction Handout for ‘early career scientists’”. All CDRmare PR relevant guidelines and further documents are available on Confluence (<https://spaces.awi.de/display/CDRmare/CDRmare+Public+Relation+-+Files>; only accessible for CDRmare members).

Boilerplate

For press releases please use the following boilerplate:

German:

In der Forschungsmission „**Marine Kohlenstoffspeicher als Weg zur Dekarbonisierung**“ – kurz **CDRmare** – der [Deutschen Allianz Meeresforschung \(DAM\)](#) untersuchen rund 200 Forschende in sechs Verbundprojekten, wie und in welchem Umfang der Ozean eine nachhaltige Rolle bei der Entnahme und der Speicherung von Kohlendioxid aus der Atmosphäre spielen kann. Langfristiges Ziel ist die Entwicklung einer Roadmap für die aktive Nutzung mariner Kohlenstoffspeicher, die dazu beitragen soll, die Folgen des menschengemachten Klimawandels zu begrenzen und die Pariser Klimaziele zu erreichen. Übergreifend koordiniert wird CDRmare (CDR = **C**arbon **D**ioxide **R**emoval = Kohlendioxidentnahme) [am GEOMAR Helmholtz-Zentrum für Ozeanforschung Kiel](#) und am [Leibniz-Institut für Ostseeforschung Warnemünde](#). Das Bundesministerium für Bildung und Forschung fördert die Forschungsmission mit 26 Mio. Euro über eine erste Phase von drei Jahren (1.8.2021 – 31.7.2024).

Weitere Informationen: www.cdrmard.de

Die [Deutsche Allianz Meeresforschung](#) erarbeitet mit ihren 22 Mitgliedseinrichtungen lösungsorientiertes Wissen und Handlungsoptionen für einen nachhaltigen Umgang mit den Küsten, Meeren und Ozeanen.

English:

In the research mission “**Marine carbon sinks in decarbonisation pathways**” – in short: **CDRmare** – of the [German Marine Research Alliance \(DAM\)](#), about 200 scientists in six collaborative research consortia are investigating, how and to what extent the ocean can play a sustainable role in the removal and storage of carbon dioxide from the atmosphere. The long-term goal is to develop a roadmap for the active use of marine carbon sinks in order to contribute to the mitigation of the impacts of anthropogenic climate change and to help achieve the Paris climate goals. CDRmare (CDR = **C**arbon **D**ioxide **R**emoval) is coordinated at the [GEOMAR Helmholtz Centre for Ocean Research Kiel](#) and the [Leibniz Institute for Baltic Sea Research Warnemünde](#). Germany's Federal Ministry of Education and Research is funding the research mission with 26 million euros over an initial phase of three years (1.8.2021 – 31.7.2024).

Further information: www.cdrmard.de/en

The [German Marine Research Alliance](#) and its 22 member institutions develop solutions-oriented knowledge and potential courses of action for the sustainable use of coasts, seas and oceans.

G. PUBLICATIONS

If not specified otherwise all English materials and publications should be written in British English.

Scientific Publications

For all scientific publications in connection with CDRmare the following acknowledgement should be used:

The authors acknowledge the financial support from / This study was funded by the Federal Ministry of Education and Research of Germany (BMBF) in the framework of CONSORTIUM'S NAME (project number xxx), one of the six research consortia of the German Marine Research Alliance (DAM) research mission "Marine carbon sinks in decarbonization pathways" (CDRmare).

Please make sure to use the correct project number (‘Förderkennzeichen’) and not the pre-proposal number (‘Skizzenkennzeichen’).

OceanRep, managed by the GEOMAR library and technically supported by the Kiel Data Management Team, is an open access digital collection of research output of mainly GEOMAR staff (GEOMAR Archive). This repository will be used for also archiving all CDRmare publications. The lead authors of the publications send the DOI number to Barbara Schmidt (bschmidt@geomar.de) including naming CDRmare and the respective consortium / consortia. Publication information entered in OceanRep will automatically be reproduced on the CDRmare website (<https://cdrmare.de/en/publikationen/>).

H. CDRmare Corporate Identity

Corporate Design

The research mission strives to present itself uniformly to the outside across consortia. CDRmare provides various templates for posters, presentations and other documents using common fonts and recognisable layout elements. All elements, materials and features can be found on confluence. A corporate identity manual containing guidelines for ensuring the correct is in progress.